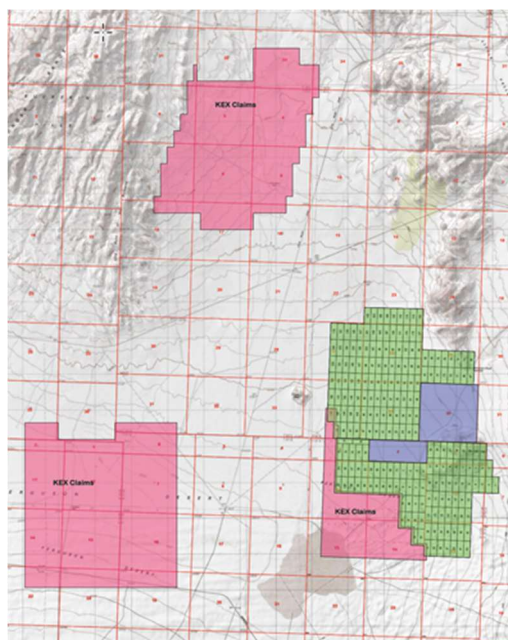


FOR IMMEDIATE RELEASE

**Kennecott Exploration Company Stakes Claims adjoining Thompson Knolls
Porphyry Cu-Au-Ag-Mo Discovery**

Vancouver, BC, Sept. 24, 2025

BCM Resources Corporation (BCM) (TSX-V: B), has recently become aware that Kennecott Exploration Company ('KEX') has completed a large-scale claim staking program both adjoining and in close proximity to BCM's Thompson Knolls ('TK') Porphyry Cu-Au-Ag-Mo Discovery.



KEX is the exploration arm of Rio Tinto Group, the world's second largest miner by market capitalization. BCM's TK project is situated approximately 125 miles southwest of Kennecott Utah Copper LLC's Bingham Canyon Mine which is located approximately 20 miles southwest of Salt Lake City, Utah.

The operating Bingham Canyon Mine is one of the largest and deepest open pit mines in the world and ranks among the top 10 copper producing mines in history.

BCM's management believes that KEX's staking program further validates the potential of the Thompson Knolls Porphyry Cu-Au-Ag-Mo discovery.

About BCM Resources Corporation

BCM Resources Corporation is a diversified Canadian mineral exploration company now focused on completing Phase One discovery drilling of the Thompson Knolls property, its key

asset. BCM also controls prospective Copper, Gold, and Molybdenum exploration projects in British Columbia. BCM Resources is managed by experienced and successful board members and advisors. For further information, including area maps, sections, and photos, please visit our web site at www.bcmresources.com or contact us by e-mail at info@bcmresources.com.

ON BEHALF OF BCM RESOURCES CORP.

**“Sergei Diakov”
Chief Executive Officer**

For further information please contact:

Investor Relations, Telephone: 1 (604) 646-0144, ext. 222

info@bcmresources.com

www.bcmresources.com