



**Thompson Knolls
New Copper-Gold-Silver-Molybdenum Discovery
Located in the Great Basin, Western Utah**

September 2025

Cautionary Notes & Forward-Looking Statements

- This presentation contains certain information that may be deemed “forward-looking statements,” or “forward-looking information” (as defined under applicable securities laws), with respect to BCM Resources Corp. (the “Company” or “BCM Resources,” or “BCM”) and its Thompson Knolls property/project (as described herein). Such forward-looking information/statements should not be read or interpreted as guarantees of future performance or results and involve known and unknown risks, uncertainties, and other factors that may cause actual results, performance, achievements, or developments to be materially different from those expressed or implied by such forward-looking information/statements. Forward-looking information/statements are generally, but not always, identified by the use of words such as “expects”, “expected”, “budgeted”, “forecasts”, “anticipates”, “plans”, “believes”, “intends”, “estimates”, “projects”, “aims”, “potential”, “goal”, “objective”, “prospective”, and similar expressions, or that events or conditions “will”, “would”, “may”, “could” or “should” occur.
- Although the Company believes the forward-looking information/statements contained in this presentation are reasonable, based on information available on the date hereof, by its nature, forward-looking information involves assumptions or known and unknown risks, uncertainties and other factors which may cause the Company’s actual results, level of activity, performance or achievements, or other future events, to be materially different from any anticipated results, performance, achievements or other anticipated events expressed or implied by such forward-looking information.
- These statements should not be read as guarantees of future performance or results. Such statements involve known and unknown risks, uncertainties and other factors that may cause actual results, performance or achievements to be materially different from those expressed or implied by such statements, including but not limited to: risks and uncertainties associated with general economic conditions; adverse industry events; the receipt of required regulatory approvals and the timing of such approvals; that the Company maintaining good relationships with the communities in which it operates or proposes to operate, future legislative and regulatory developments in the mining sector; the Company's ability to access sufficient capital from internal and external sources, and/or ability to access sufficient capital on favorable terms; mining industry and markets in Canada and generally; the ability of the Company to implement its business strategies; and their competition; the risk that any of the assumptions prove not to be valid or reliable, which could result in delays, or cessation in planned work, risks associated with the interpretation of data, the geology, grade and continuity of mineral deposits, the possibility that results will not be consistent with the Company's expectations; public health crises; the Company's financial and operating results differing materially from management's current expectations; as well as other assumptions risks and uncertainties applicable to mineral exploration and development activities and to the Company, including as set forth in the Company's public disclosure documents filed on the SEDAR+ website at www.sedarplus.ca.
- This presentation contains information about neighboring properties on which BCM Resources does not have the rights to explore or mine. Investors are cautioned that information on mineralization on adjacent properties is not necessarily indicative of similar mineralization that may be hosted on the Thompson Knolls property.
- This presentation may include historic technical information that was generated prior to the introduction of NI 43-101. Details of the sampling methods, security, assaying, and quality control methods used in the generation of this historical technical data are unknown to BCM Resources, and have not been verified by a “Qualified Person” for the purposes of NI 43-101, and should not be relied upon, although to the best of the Company’s knowledge, the historic technical information pertaining to the Thompson Knolls project and discussion of it as disclosed in this presentation is neither inaccurate or misleading.
- The information herein does not constitute an offer to sell or the solicitation of any offer to buy any securities. This presentation is not intended for distribution to, or use by, any person or entity in any jurisdiction or country where such distribution or use is contrary to local securities laws or regulations. Any unauthorized use of this presentation is strictly prohibited.
- Qualified Person: Rick Redfern, MSc Geology is the “qualified person” for the purposes of the National Instrument 43-101 Standards of Disclosure for Mineral Projects (NI- 43-101), and he has reviewed and approved the technical disclosure contained in this presentation.

Management & Directors

EXPERIENCED SUCCESSFUL MANAGEMENT TEAM

Scott Steeds, Chairman of the Board of Directors

- Over 20 years of experience at large successful Venture Capital firms working with high-net-worth individuals and Institutional investors actively financing/investing in high-profile mineral exploration projects worldwide.

Dr. Sergei Diakov, MSc (Hons) Economic Geology and Mining Engineering, PhD in Economic Geology, Associate Professor, Peoples' Friendship University, Moscow, Russia, President & CEO, and Director

- Extensive global expertise as exploration manager for BHP, Anglo American, and AngloGold Ashanti in the exploration and discovery of porphyry Cu-Au deposits.
- Assembled and led the BHP exploration team to a discovery of the Oyu Tolgoi porphyry Cu-Au-Mo deposit in Mongolia.
- Managed and led AGA exploration team for the discovery of Nuevo Chaquiro porphyry Cu-Au deposit in Colombia.

Dale McClanaghan, MBA, CFO, and Director

- Extensive experience in finance.
- Past CEO & President of Adrian Resources Ltd.
- Past CEO & President of Van City Enterprises Ltd.
- Former corporate banker with Bank of Montreal.

Darcy McKeown, Director

- President of PVL Group, President of NSD Inland Port, Owner/operator of Terrace Steel Works and Big River Distributors.
- Over 20 years of ownership and management experience in heavy industrial construction and all aspects of a construction business; working together with Newmont Mining, AltaGas, Cedar LNG, and the development of NSD Inland Port.
- Extensive knowledge of business market trends and the ability to capitalize on opportunities to meet these needs.

Technical Team

WORLD-RENOWNED EXPLORERS WITH PROVEN SUCCESSFUL DISCOVERY TRACK RECORD

Dr. Sergei Diakov, MSc (Hons) Economic Geology and Mining Engineering, PhD in Economic Geology, Associate Professor, Peoples' Friendship University, Moscow, Russia

- More than 30 years of global exploration expertise working for mining majors BHP, AngloGold Ashanti, and Anglo-American, leading exploration teams to discoveries of porphyry Cu-Au deposits.
- Two significant copper-gold porphyry discoveries: Oyu Tolgoi in Mongolia and Nuevo Chaquiro in Colombia.

John P. Schloderer, BA Geology, New York University, New York City, USA, MSc Geology, University of Arizona, Tucson, AZ, USA

- Over 35 years of international mineral exploration experience and mineral property evaluations, including 25 years with BHP and 3 years with Gold Fields.
- Participated in drill-out of Escondida porphyry copper deposit in Chile.
- Led resource definition drilling at Reko Diq porphyry, Pakistan, with successful listing of the Tethyan Copper Company on the ASX with eventual sale to Barrick Gold/Antofagasta.

Rick Redfern, MSc Geology, UCLA, USA, AIPG, QP

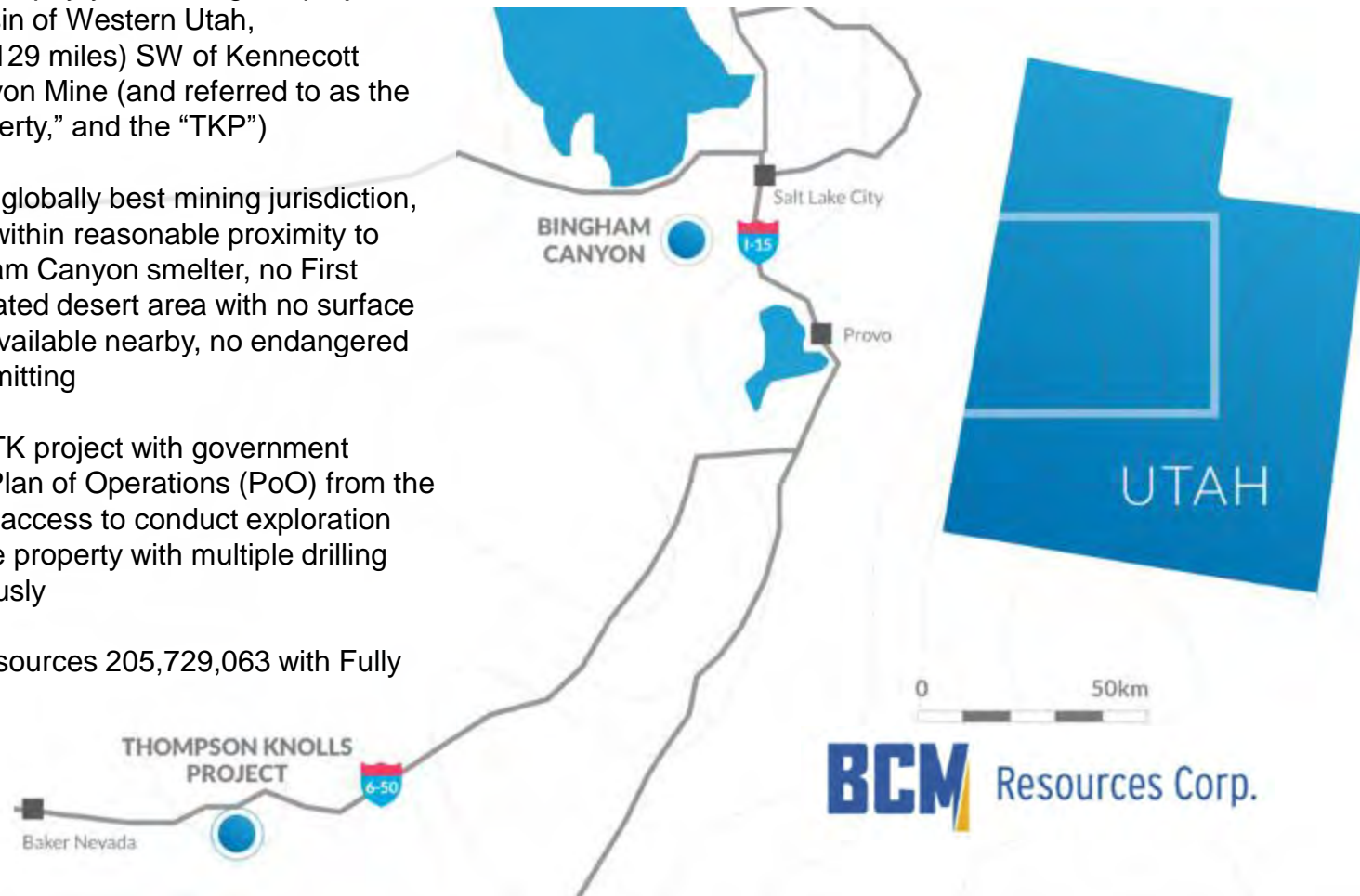
- Over 30 years of experience exploring for gold and copper for ABX and Homestake with Au and porphyry-type projects across the Southwestern US and Mexico.
- Discovered the Moly Dome molybdenum porphyry deposit in northern Nevada.
- Worked on porphyry prospects in the Cananea district of Mexico, Highland Valley and Endako of B.C., Canada.

Octavio Urbina, BSc (Hons) Geology, University of Chile, Santiago, Chile

- Over 20 years of mineral exploration experience exploring for Cu and Cu-Au porphyries in the Central Andes, IOCGs, precious metals epithermal systems in Central and Southern Andes, including Deseado Massif in Argentina.
- Significant fieldwork experience in mapping, prospecting, and sampling.
- Experience in running diamond/RC drilling programs.

General Introduction

- BCM Resources Corporation (Symbol "B", TSX-Venture Exchange), ("Company", "B", "BCM", "BCM Resources") is a diversified Canadian mineral exploration company focused on the continued exploration of its flagship Thompson Knolls (TK) Porphyry Cu-Au-Ag-Mo project, located in the Great Basin of Western Utah, approximately 208 km (129 miles) SW of Kennecott Copper's Bingham Canyon Mine (and referred to as the "Property," the "TK Property," and the "TKP")
- Project Highlights: Utah globally best mining jurisdiction, excellent infrastructure within reasonable proximity to railroads and the Bingham Canyon smelter, no First Nations, sparsely populated desert area with no surface waters, water sources available nearby, no endangered species, easy mine-permitting
- BCM is working on the TK project with government approval via a 10-year Plan of Operations (PoO) from the BLM*. This allows rapid access to conduct exploration drilling operations on the property with multiple drilling rigs working simultaneously
- I/OS shares of BCM Resources 205,729,063 with Fully Diluted 241,987,148**

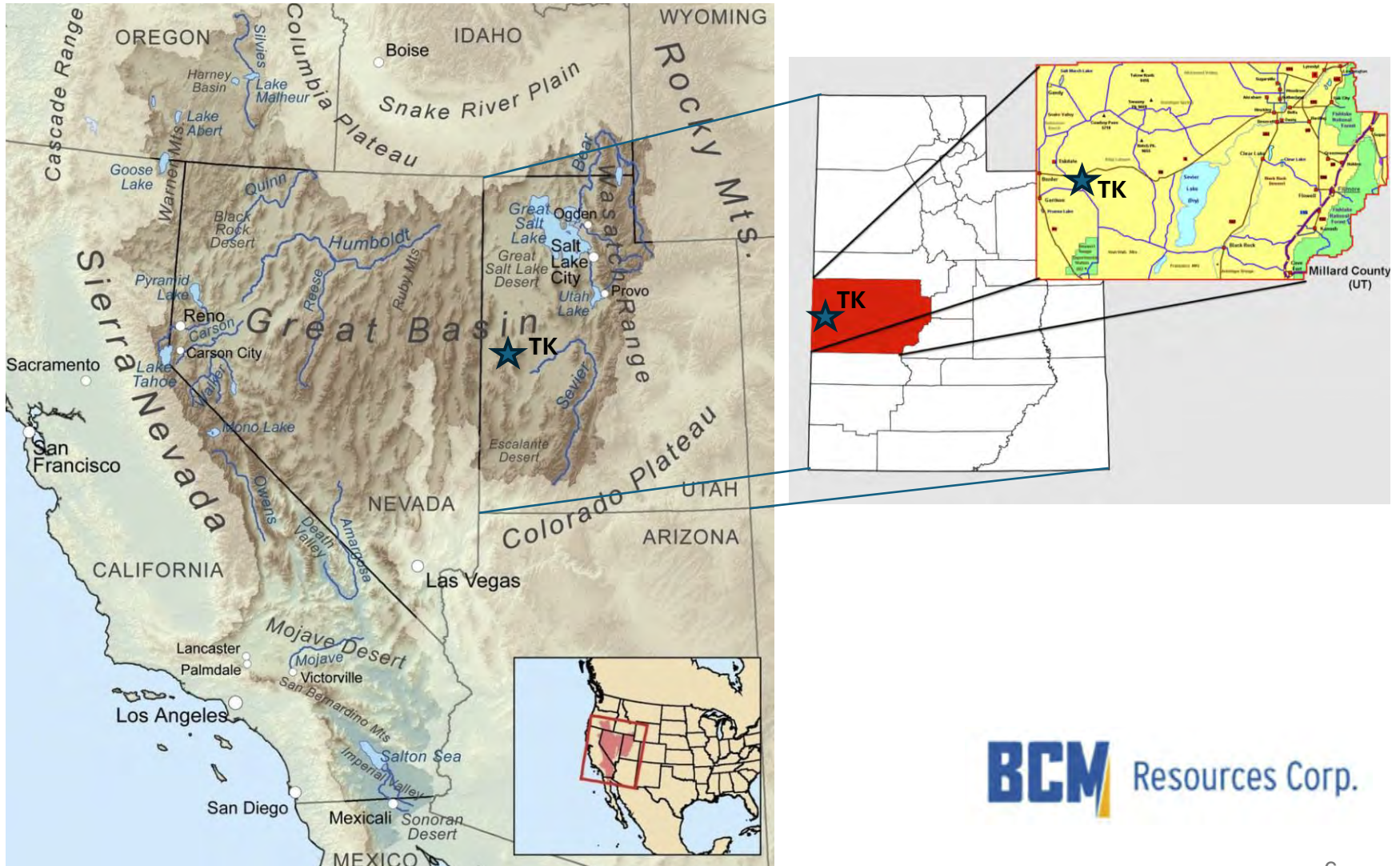


* Received in 2023

**As per the May 31, Financial Statements.

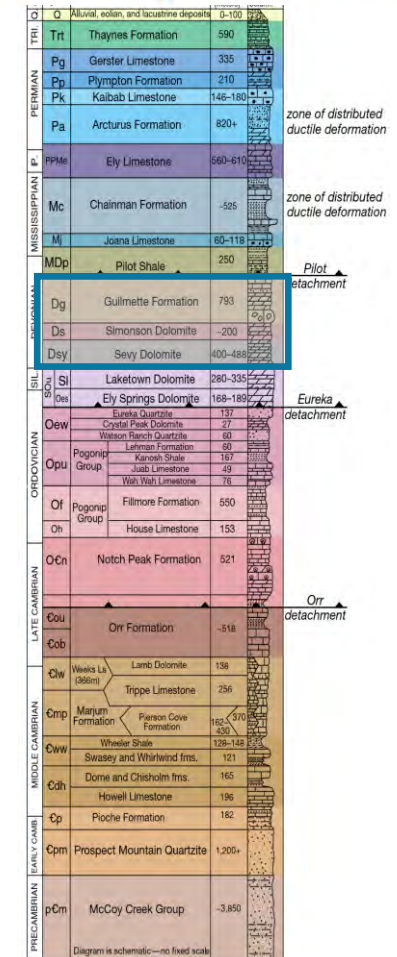
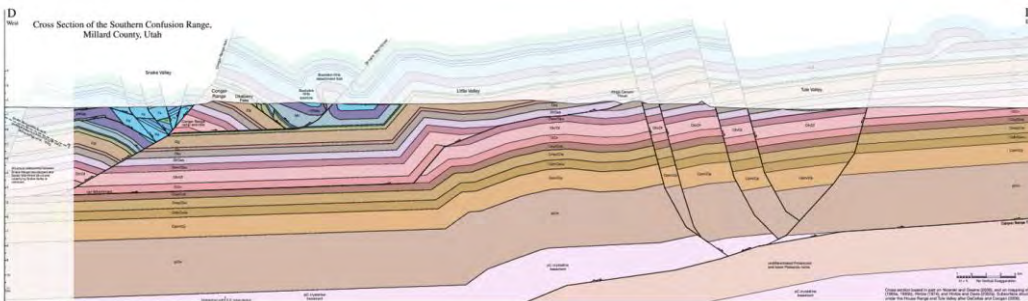
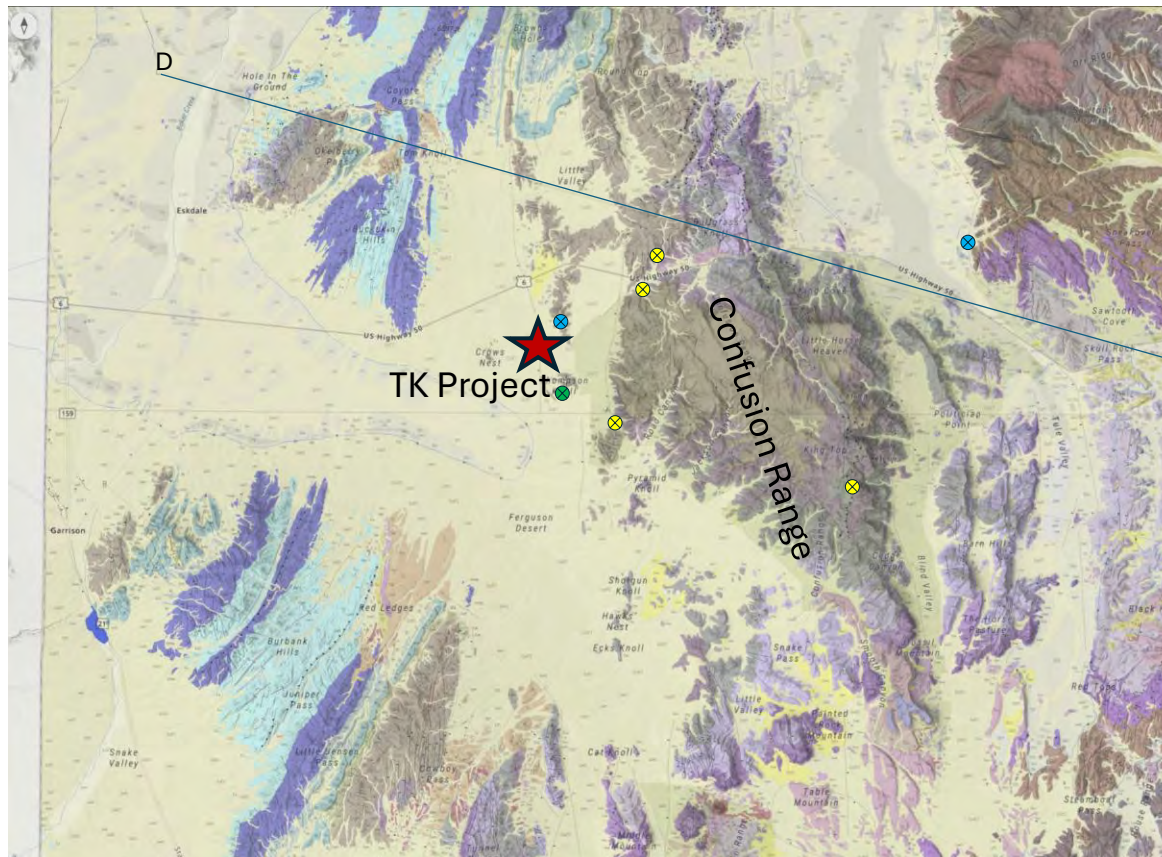
Geographic Location

Thompson Knolls is located in Utah's Millard County, 28 km (17 miles) east of the Nevada-Utah border, 4 km (2.5 miles) south of Highway 6/50 – the “Loneliest Road in America”



- The TK Property lies west of the Confusion Range, known for numerous outcropping gold-bearing jasperoids, including the King's Canyon gold deposit ~5 miles (8 km) to NE of TK
- The Property ground is covered by post-mineral fanglomerates composed of products of weathered destruction, transportation, and deposition of various-sized debris from Devonian limestones and dolomites from the Confusion Range into the Ferguson valley
- Bedrock composed of a Devonian age package of carbonate rocks from top to bottom:
 - Guilmette formation limestones 2,600-2,800 ft (792-853 m) thick
 - Simonson formation dolomites 540-930 ft (165-283 m) thick
 - Sevy formation dolomites 1,300-1,600 ft (396-488 m) thick
- Dominant structures in the area are a complex of folds and cross-cutting subvertical faults of N-S and of NW-NE orientations, with thrust faults
- Based on the regional geology and mineral prospects in the area, the Company refers to the mineral district area around TK as the "Thompson Knolls District"
- The Thompson Knolls District includes several gold, silver, and base metal prospects located on the periphery of the TK Property
- Additional mineral prospects may be located within the limits of the Thompson Knolls District

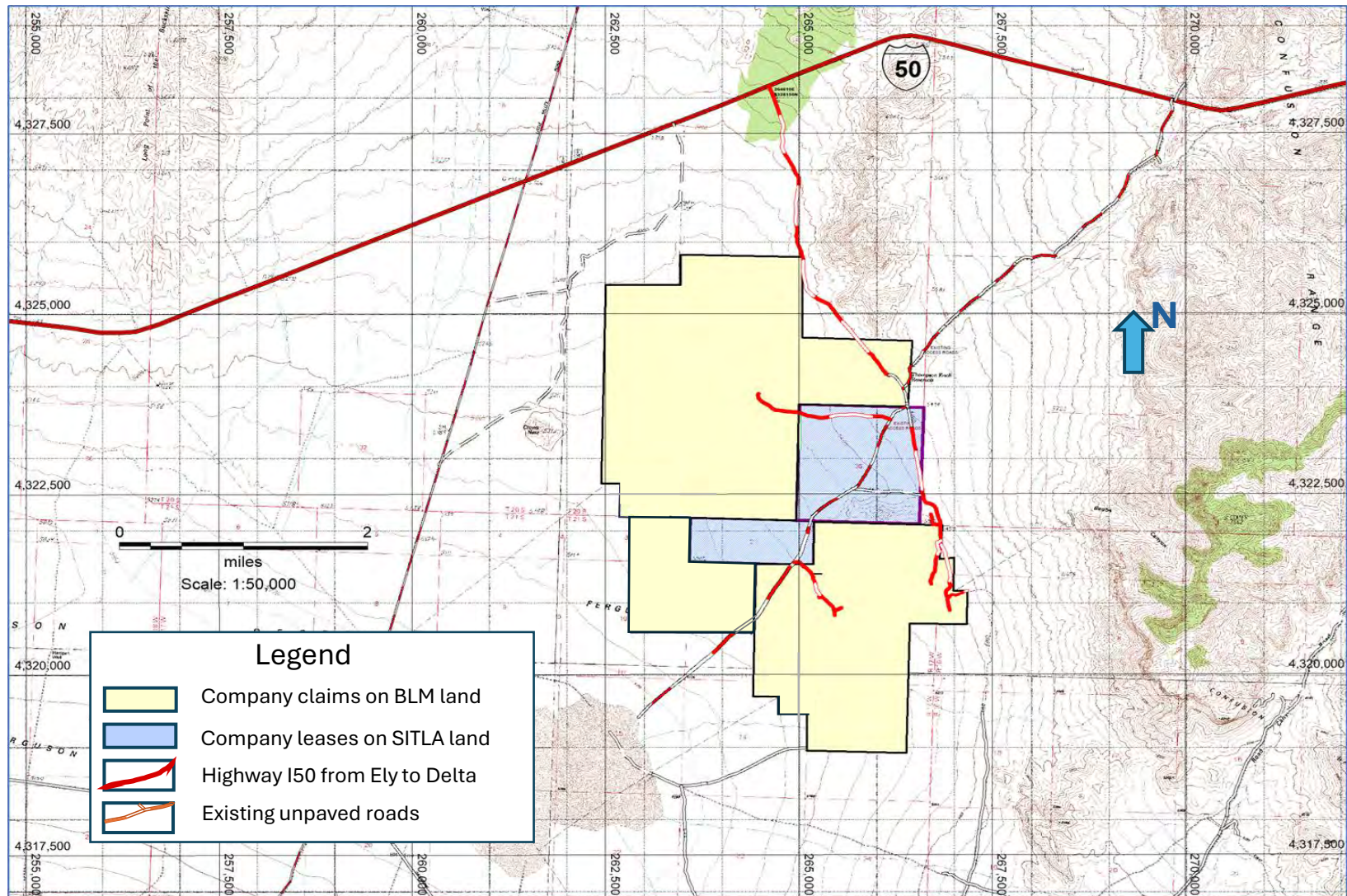
Regional Geology Map



Legend

- ★ TK Project location
- ✕ Gold-silver occurrences
- ✕ Base metal occurrences
- Copper occurrences

BCM's TK Landholdings



The TK Property comprises 225 BLM claims and 2 parcels of Utah State leased lands totaling 5,540 acres (2,242 ha)

Exploration History

- Exploration history started with a U.S. Geological Survey aeromagnetic survey conducted in 1972, outlining a magnetic “high” anomaly at TK, which subsequently led to the formulation of a porphyry copper deposit model for this target area
- From 1989 to 1996, Crown Resources and Centurion Mines Corp. drilled 12 reverse circulation drillholes on and around the TK Property
- Drillhole CKC-96-10, located in the southern portion of the TK Property referred to as the Discovery Knoll (“DK”) project area, showed a 9.14 m (30 ft) intercept at 82 m (269 ft) depth that assayed **8.01 g/t Au**, including a 3.05 m (10 ft) interval of **21.06 g/t Au**. Below, at 131 m (430 ft) depth, this same hole intercepted a 6.1 m (20 ft) interval of Cu-Ag mineralization of **0.28 % Cu** and **2.9 oz/t Ag**
- Inland Explorations Ltd. originally established a ground position at Thompson Knolls in 2007 and expanded its claims in 2015 and 2022
- BCM Resources earned 51% of the TK Property from Inland Explorations Ltd. in 2022, through funding of exploration work at the Property, including conducting a series of mapping, sampling, ground magnetics, and IP surveys, which were later supplemented by additional ground gravity, drone magnetics, AMT geophysics, and drilling
- Upon reaching 51% of TKP, BCM Resources and Inland merged in 2023, giving BCM 100% ownership of the Thompson Knolls Property

TKP Geophysical / Geological Data Integration

- BCM technical team compiled all historical geophysical data into a 3D geophysical model
- Combined geophysical and geological drilling data with surface geology were used as base model for directing targeted drilling into highly mineralized parts of the TKP porphyry system

RTP* Mag:

Area 1

Depression in magnetic-high zone encompassing TK drilling

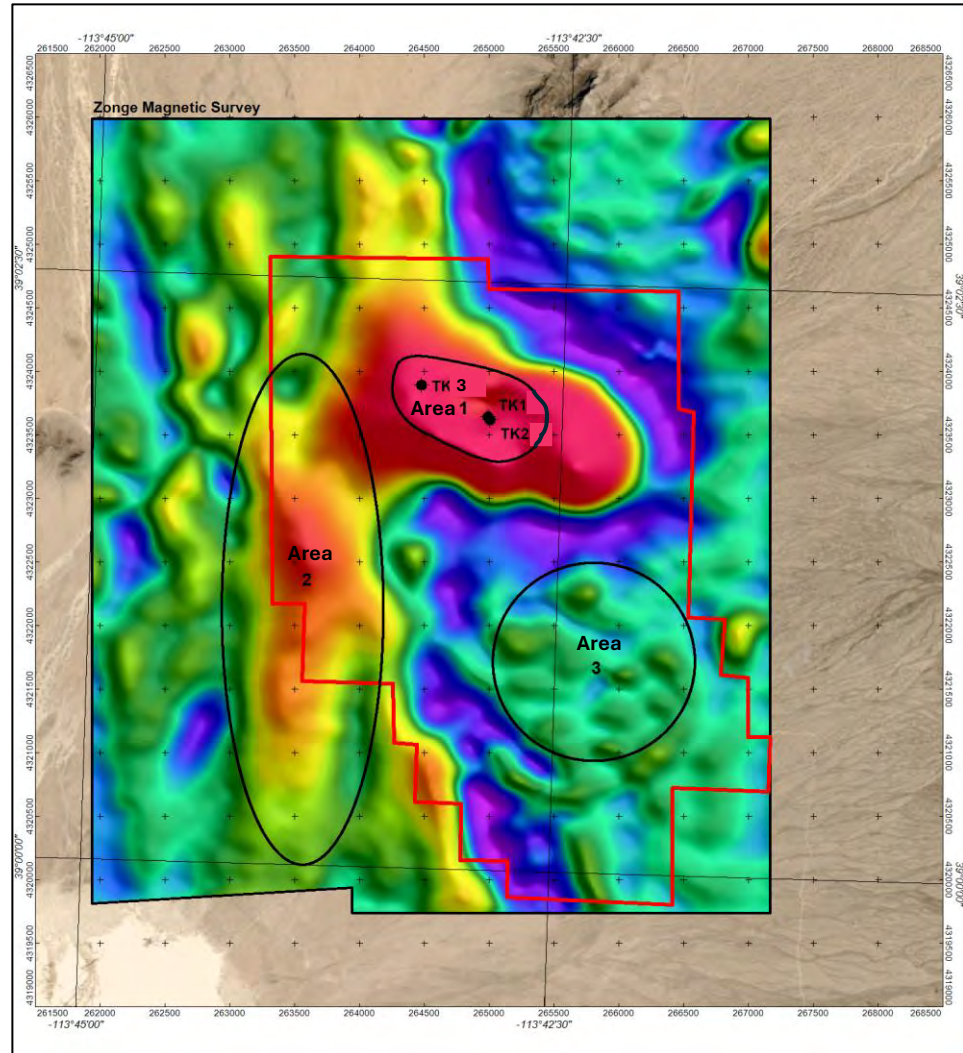
Area 2

Interpreted western extension of magnetic intrusive complex

Area 3

Buried low-magnetic intrusion at DK

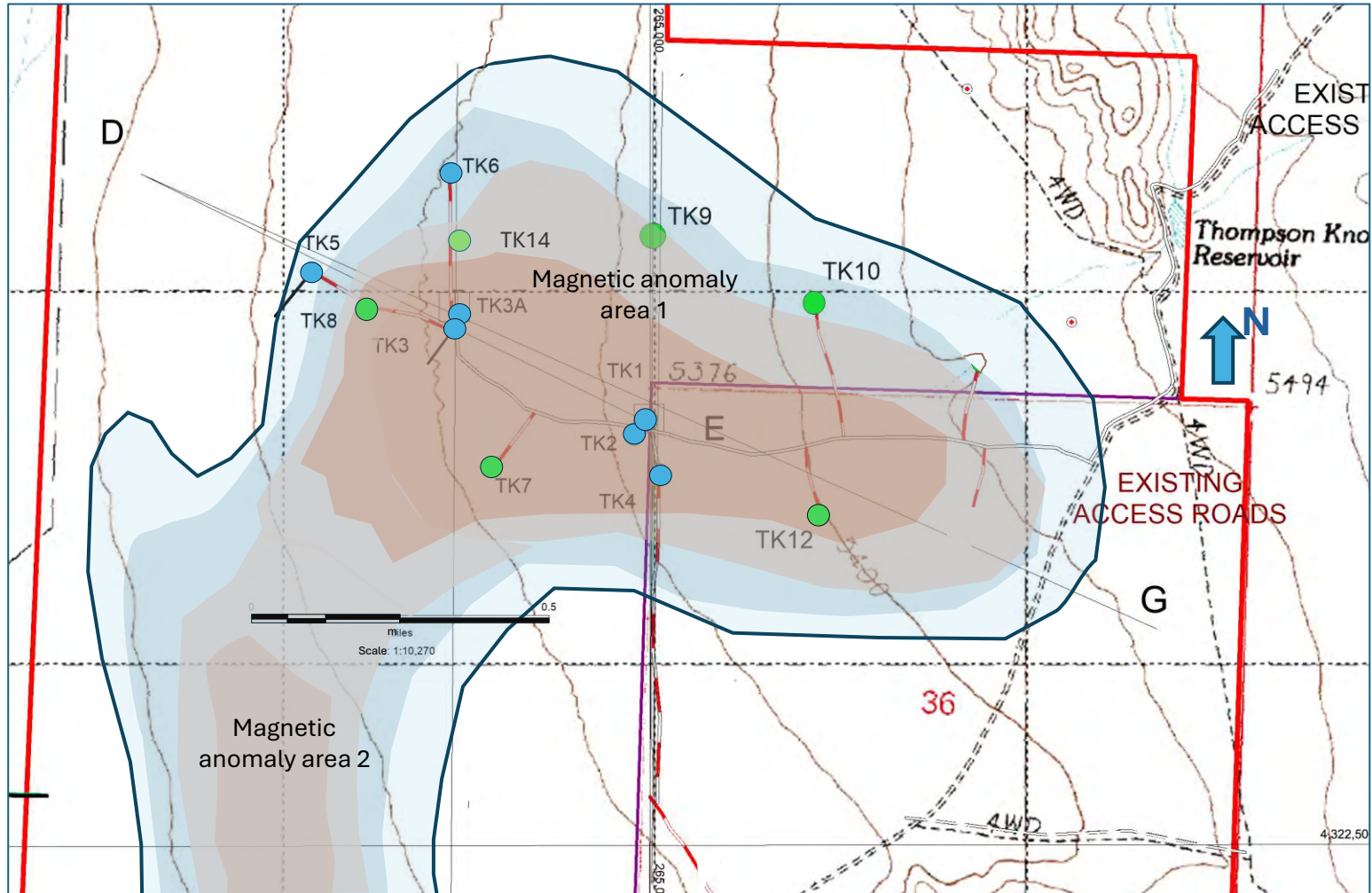
* Magnetics reduced to pole (RTP)



Thompson Knolls Project Current Status

- “B” is on the hunt for an “Elephant-size” porphyry copper deposit in Utah, and TK is essentially a blind target
- The TKP Porphyry/Skarn system is buried under a Fanglomerate cover of varying thickness
- “B” applied for and received a 10-year Plan of Operation drill permit from Utah BLM in 2023. Said permit allows the Company to use multiple drill rigs at any one time
- To date, the Company has conducted 3 phases of drilling totaling 12 drillholes, of which 7 delivered mineralized intercepts
- Phase 3 drilling resulted in the discovery of very encouraging Cu-Au-Ag mineralization in Drill Hole TK8, which returned **155.4 m (510 ft) @ 0.66% Cu, 0.12 g/t Au, 7.4 g/t Ag**, including **21.3 m (70 ft) @ 1.25% Cu, 0.2 g/t Au, 15 g/t Ag**
- The Company is assessing next steps with the goal of capital efficiency
- BCM Resources is leveraging technology, people, and process to vector into the TK Porphyry copper core and the Massive/proximal skarn

TK Phases 1, 2 and 3 Drillhole Locations



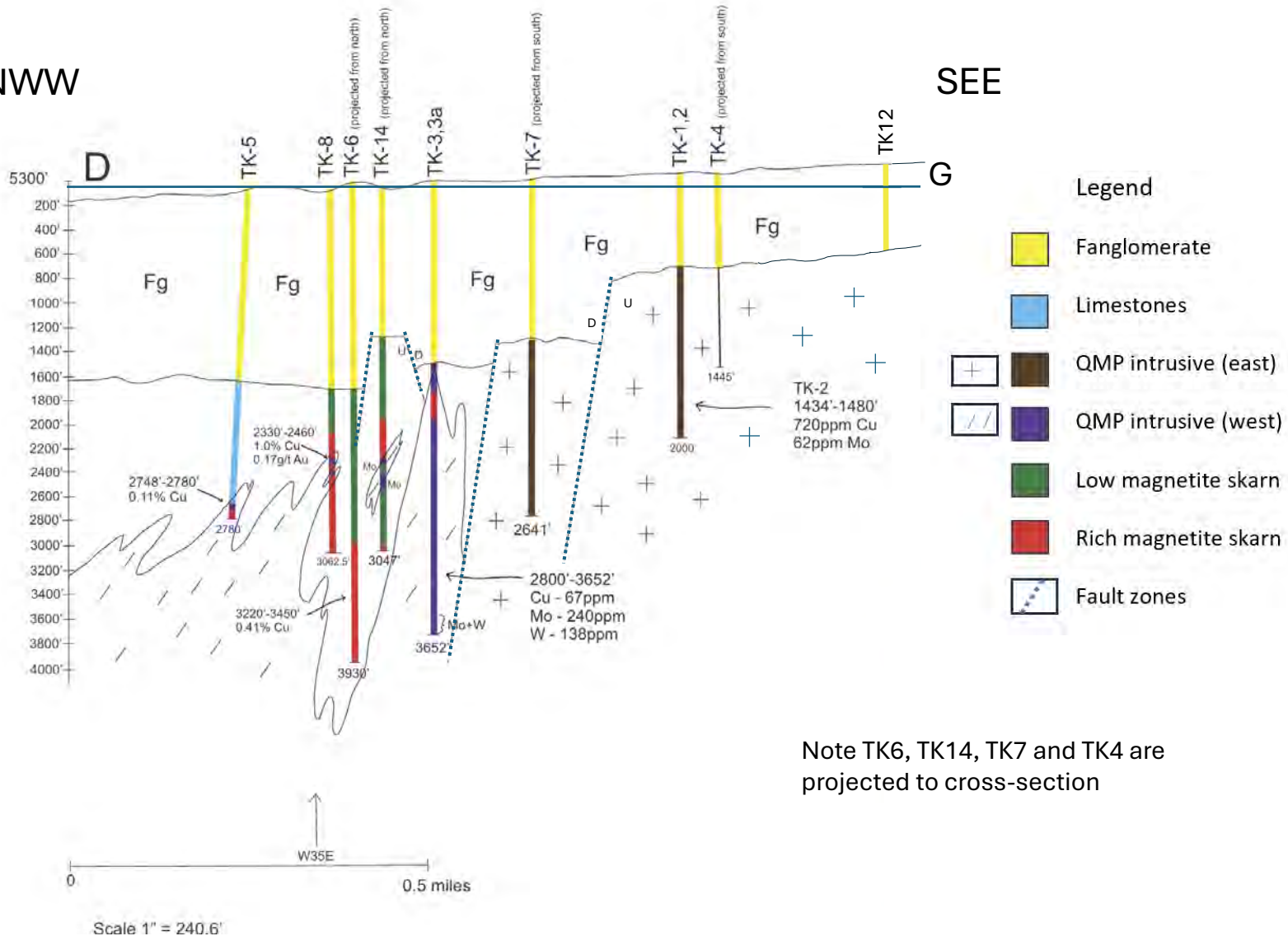
- Drillholes completed in Phases 1 and 2
- Phase 3 drillholes*
-  Magnetic anomaly areas 1 and 2
-  TKP property boundary

Note: * TK12 is only partially drilled

Longitudinal Section Line DG

NWW

SEE



Note TK6, TK14, TK7 and TK4 are projected to cross-section

Selected Images of Mineralized Core



Photo 1: Drill hole TK6
at 1,042.4 m (3,420 ft)
depth. Sulfide-rich
magnetite breccia in 70.1
m (230 ft) core interval of
the “Eureka” skarn zone
with 9.1 m (30 ft) interval
from 1,036.3 -1,045.5 m
(3,400 to 3,430 ft)
assaying **0.97% Cu, 0.14
g/t Au, 10.3 g/t Ag,
0.011% Mo**

Photo 2: Drill Hole TK8
3 m (10-ft) interval from
676.7 to 679.7 m (2,220 -
2,230 ft) depth with massive
sulfide-magnetite-diopside
breccia skarn assaying
**1.32% Cu, 0.29 g/t Au, 15.0
g/t Ag, 0.002% Mo**

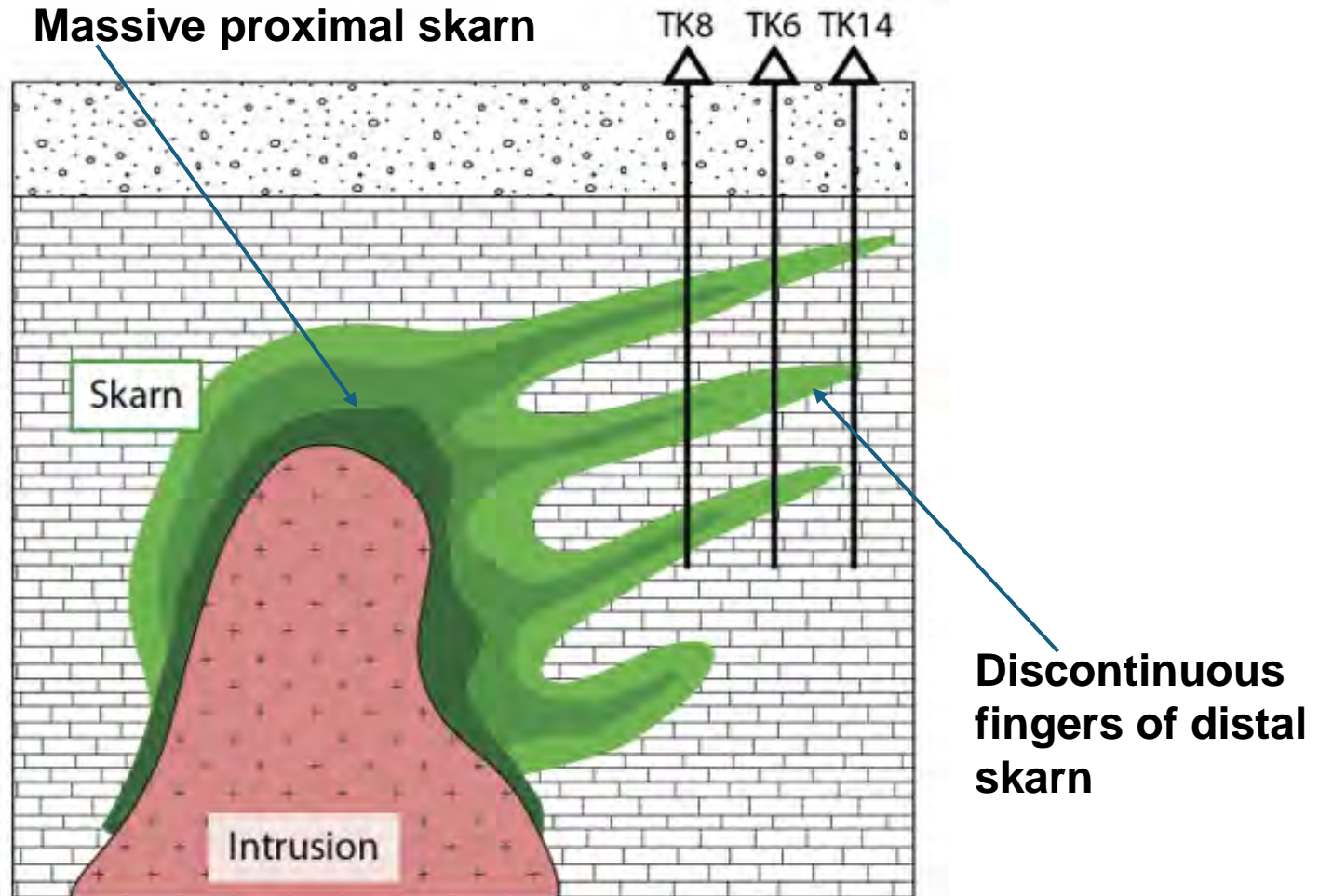


Core Re-Logging Summary

- In May-June 2024, re-logging of the skarn intervals in the TK drill core was undertaken
- Intersected skarn intervals at TK6, TK8, TK9, and TK14, as well as the very bottom of TK5, are represented mainly by distal skarn mineral assemblages of pyroxene and serpentine, whereas proximal skarn comprises pale red garnet and pyroxene, indicative of a closer distance to the center of the copper system
- Copper mineralization contains chalcopyrite, pyrrhotite, pyrite, and minor magnetite in association with garnet, pyroxene, and serpentine
- Skarn alteration intersected at Thompson Knolls shows a spatial mineralogical and geochemical variability that is useful as an exploration vector
- Geometry and mineralogy of skarn alteration intersected to date indicate that the Copper core has not yet been located
- Skarn alteration is associated with veinlet and stockwork zones that contain high abundances of Fe-Mn oxides, as encountered in drill holes TK8 & TK14
- Numerous aspects in the observed skarn mineral assemblages imply an intermediate to distal formation environment relative to the source of the hydrothermal ore fluid

Schematic Geological Model of TK Porphyry/Skarn System

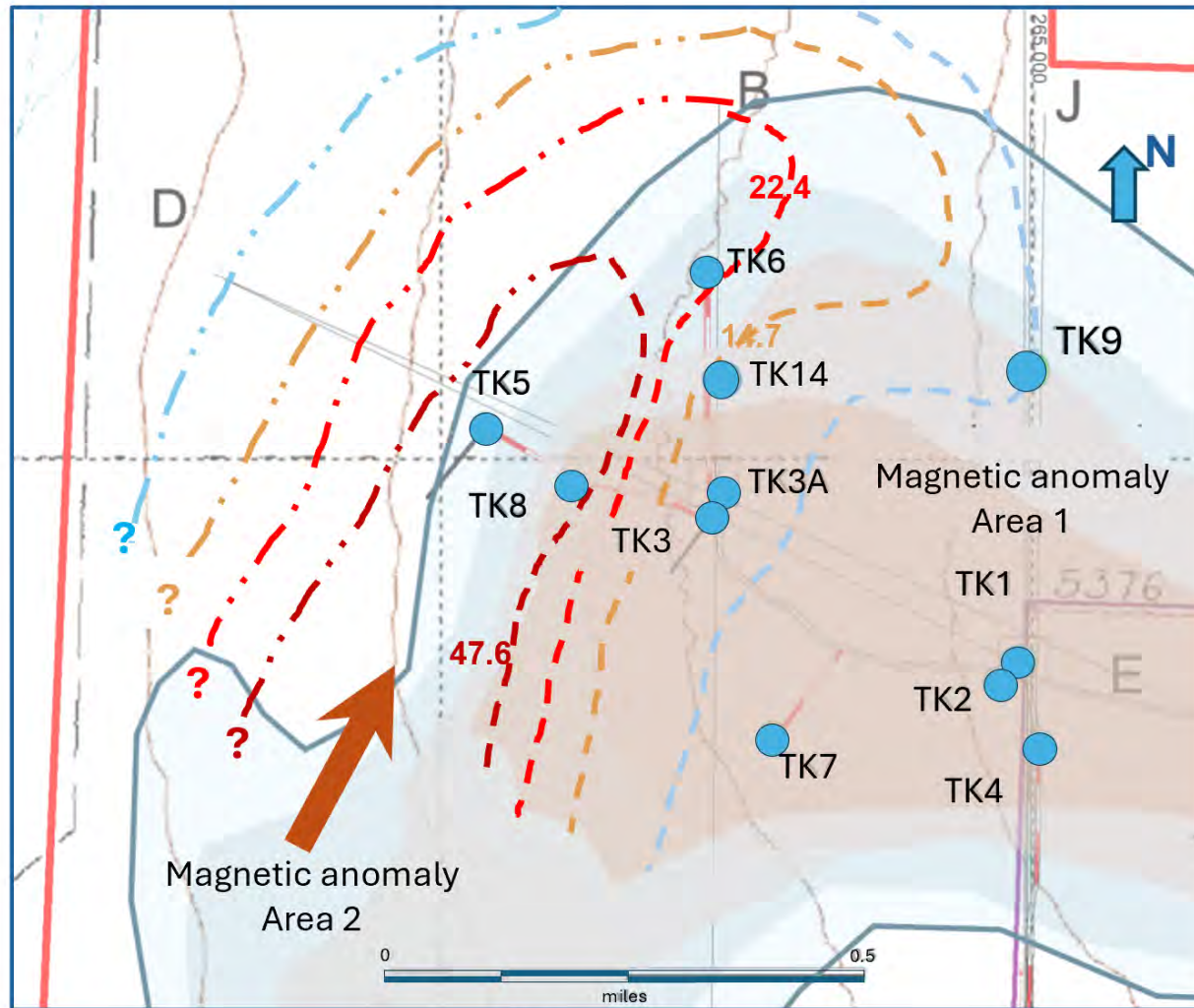
Looking NW



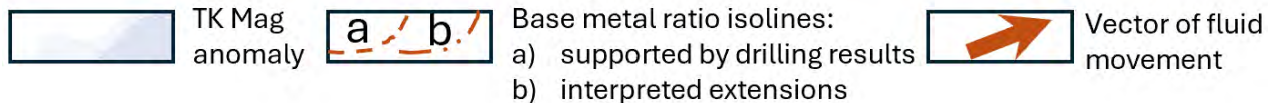
Research Results

- Holes TK8 and TK6 are prime examples of the proposed concept with significant Cu-Mo-Au mineral intercepts
- Plotted $\text{Cu}/(\text{Pb}+\text{Zn})$ and $(\text{Cu}+\text{Bi})/(\text{Pb}+\text{Zn}+\text{Mn})$ ratios for the intersected skarn intervals indicate trend to SSW
- Higher values indicate a more proximal position to the source of the fluid
- Drill Holes TK8 and TK6 show distinctly higher-weighted average $\text{Cu}/(\text{Pb}+\text{Zn})$ values compared to Drill Holes TK14 and TK9, indicating that their systematic values decrease with increasing distance from the fluid source
- Garnet/pyroxene ratio, fluid inclusion studies in pyroxene are consistent with this assumption
- The most obvious scenario is that the fluids came from the geophysical anomalous Area 2 SW of TK8, hence this area deserves primary attention for follow-up exploration drilling
- The porphyry “yolk” and massive/proximal skarn, main targets of BCM exploration drilling at Thompson Knolls, have not yet been reached
- Focus of the step-out drilling will be to the SW of Hole TK8 to test lateral continuation of the mineralized skarn

Our Interpretation



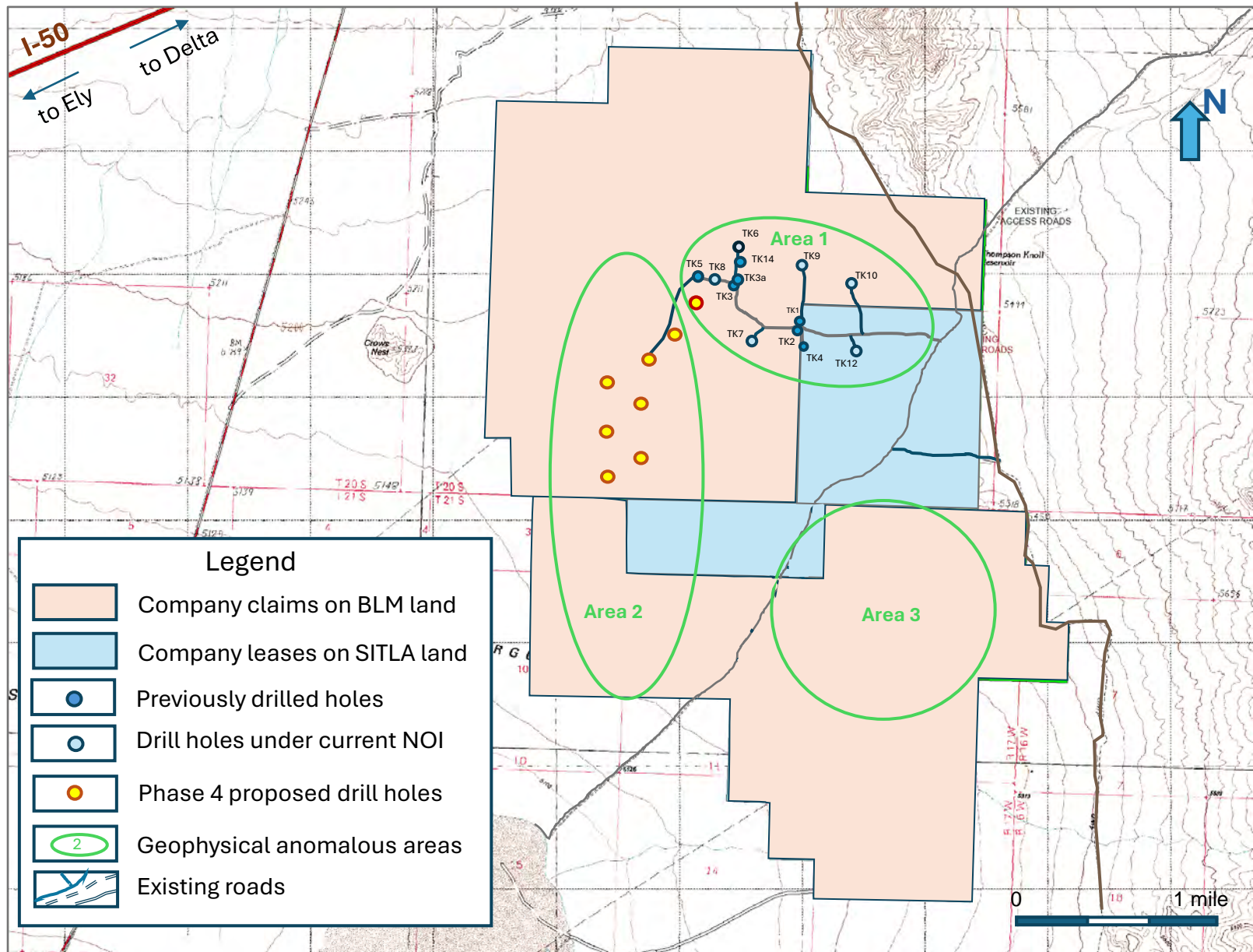
Legend



Phase 4 Drilling Plans

- The company's vector path to the core of the TK mineralized system continues to be refined with each phase of drilling
- After Phase 3, with more drilling data available, we are now able to apply a more scientific approach in our exploration program
- Our focus will turn to drilling of the SW extension within the geophysical anomaly Area 2
- Initially, as a concept confirmation, "B" plans to drill three new holes designed as a step out (Phase 4 drilling)
- Successful results will support plans to conduct further drill-testing of mineralization in geophysical Area 2 with five additional drill holes south of TK17
- Proposed amount of drilling for Phase 4 is eight drillholes totaling 12,192 m (40,000 ft) with targeted depth of 1,524 m (5,000 ft)
- A combination of RC/mud drilling through the cover and diamond drilling in the bedrock is planned for Phase 4. The estimated average thickness of cover is 610 m (2,000 ft)

Proposed Drill Holes in Area 2



Future Exploration

- With the successful outcome of the proposed Phase 4 drill program delivering economic intercepts in skarn and porphyry mineralization, our focus will be directed at the western anomalous Area 2 with additional drill-testing of its southern extension
- Anticipated economic intercepts in Phase 4 would significantly increase the value of the Thompson Knolls Project
- Upon success of the Phase 4 program, a **fifth** phase of drilling will be warranted to delineate an ore body, requiring additional drilling of 30 holes comprising an estimated total of up to 45,7200 m (150,000 ft) of drill work.
- If Phase 5 is successful, further additional infill exploration drilling at Discovery Knoll with metallurgical testing will be conducted in a Phase 6 drilling program
- Our strategy is to capitalize on successful exploration drilling, building the Thompson Knolls Project into an economic Tier 1 porphyry copper-gold deposit, amenable to future development by major companies
- BCM Resources has identified additional attractive targets for Cu, Au, and Ag at the Discovery Knoll area of the Property, also waiting for the right time to be drill tested



For further information, please contact:

Name: Sergei Diakov

Email: sdiakov@gmail.com, sdiakov@bcmresources.com

Phone: (760) 803-0506

END